

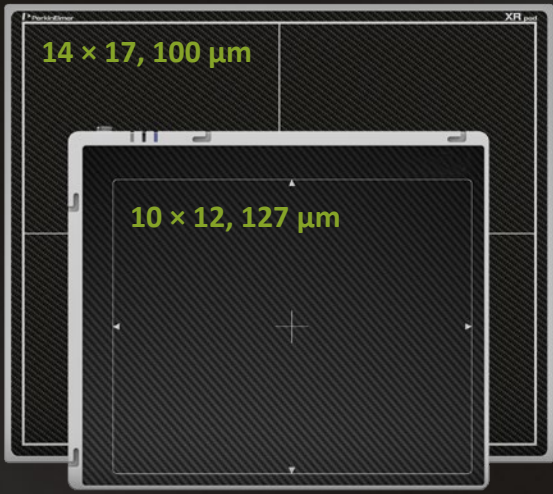
You decide!



SELECT YOUR
FAVOURITE COLOUR
FOR YOUR OWN XDR5

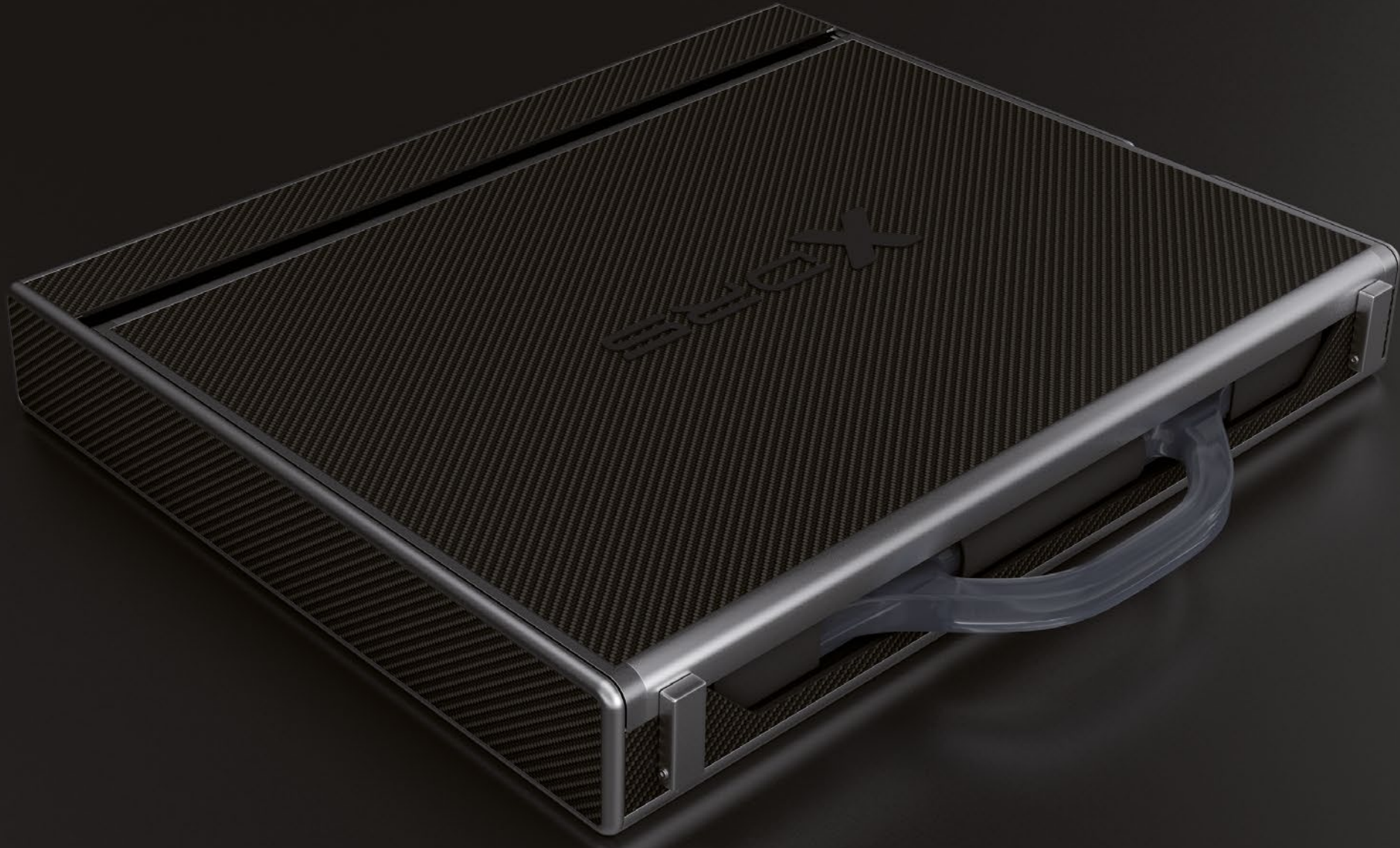


CUSTOMISE YOUR
XDR5 WITH THE LOGO
OF YOUR PRACTICE



- Housing**
 - All-in-one housing made of carbon fibre and aluminium
 - Contains tablet, detector, detector protection and spare battery
 - Weight: 9 kg (including detector and detector protection)
 - Dimensions: 510 mm × 495 mm × 80 mm
- Tablet**
 - 20" multi-touch widescreen (IPSa display with 15:10 aspect ratio)
 - Intel® Core™ i7-3687U vPro™ processor with NVIDIA® Quadro® graphics chip (2 GB)
 - 2 integrated cameras on front and rear
 - 16 GB RAM and 256 GB solid-state drive
 - Robust, glass fibre-reinforced housing
- Detector 1**
 - quattro 1012 wireless detector, CsI
 - Automatic detection of the x-rays
 - 2,040 × 2,520 pixels, pixel size 127 × 127 microns
- Detector 2**
 - quattro 1417 wireless detector, direct CsI
 - Automatic detection of the x-rays
 - 3,556 × 4,320 pixels, pixel size 100 × 100 microns
- Design**
 - Customised colour of the top surface of the housing (optional)
 - Font and logo of the practice (optional)
- Software**
 - quattro DR software for operation and image processing
 - DICOM 3.0 WG 25 standard with storage and modality worklist

XDR5



The most powerful **XDR** ever!



**SUPER
LIGHT**

Weight: 9 Kg!

Detector with protective case and carrying handle, 20" multi-touch high-performance tablet, keyboard and spare battery, packaged in aluminium and carbon fibre.

4K display, 3840 × 2560 resolution

Loss-free display of your x-ray images in unprecedented resolution and quality!

2 cuattro detectors with AED

cuattro 1012, 127 µm, CsI or
cuattro 1417, 100 µm, direct CsI



WIRELESS



WLAN, AED and battery

Detector and tablet with battery, communication via WLAN / 3G / 4G and detectors with automatic detection of x-rays. Everything connects automatically and is immediately ready for use.

Brilliant carrying and protection concept

Single carrying handle for XDR5 and detector with integrated Makrolon® detector protection and convenient, horse-friendly protective case..

Extremely easy operation

Select patients, specify areas to be x-rayed and transmit to quattro's ingenious image processing software.

i7 processor, NVIDIA® Quadro® graphics chip

Highest performance for your x-ray images. With 256 GB SSD, 16 GB RAM and integrated camera.

Integrated Bluetooth keypad

Chargeable via USB cable. Type or touch – you have the choice.

Rapid battery change

Newly developed detector protection with an opening for the battery compartment.

**UNMATCHED
SPEED**



**UNSURPASSED
QUALITY**



Outstanding software

Incredibly fast and fully automatic quattro image processing, simple and intuitive multi-touch operation and fantastic image quality. You won't believe it!

Lossless display

X-ray images have never looked better: 1 to 1 (detector resolution corresponds to the image resolution) – 100 % image information for optimum diagnostics!